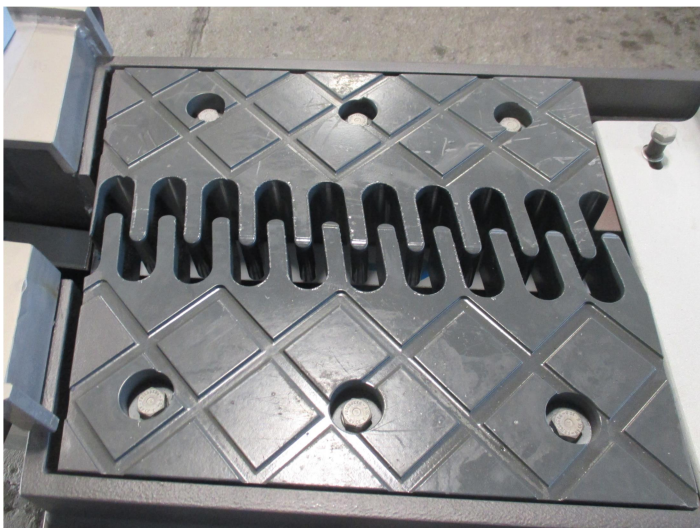


Ahrbridge and Hochstraße Sinzig

Expansion joints from Mainhardt make traffic in Rhineland-Pfalz safer. For the Ahr bridge, built between 1965 and 1967, as well as for the Hochstraße Sinzig, SCHREIBER supplied six finger joints of the type SCHREIBER FINGER with a movement capacity of up to 370 mm. Due to the water guidance integrated in the joints these joints are considered waterproof. In the walkways a special version made of stainless steel was used. The rehabilitation and repair work was carried out on behalf of the Rhineland-Palatinate State Mobility Authority.



The road bridge leads the B9 near Sinzig over several local roads in the area of the railroad station. Every day, about 23.000 vehicles pass this section and thus the expansion joints manufactured and installed by SCHREIBER.

